

Invitation to the Society of Project Management

<https://www.spm.or.jp/>



The Society of Project Management

Welcome message from the President

In today's world, digital transformation is driving social innovation and leading businesses to actively implement new ventures. It is evident that project management plays a crucial role in promoting these initiatives, and there is a growing expectation for further advancements in this field. The Society of Project Management is committed to meeting these expectations by enhancing both the theoretical and practical aspects of project management.

Every spring and autumn, research conferences are organized to provide a platform for tackling the increasingly complex, large-scale, and global nature of projects across various fields. These conferences offer participants the opportunity to share their experiences, engage in insightful discussions beyond organizational boundaries, and gather new ideas from lectures delivered by expert guests. Such interactions enrich our understanding and foster rewarding exchanges.

In addition to these conferences, our international event, ProMAC, has been held since 2002 at venues primarily in Asia and Europe. This gathering attracts numerous participants from Japan and abroad, facilitating international collaboration and dialogue.

Moreover, our Society is a member of the International Project Management Association (IPMA), allowing us to actively participate in global partnerships and information dissemination. Within Japan, we contribute as part of the ISO TC258 National Committee and collaborate with related organizations such as the Science Council of Japan and the Federation of Management Engineering Societies (FMES). We maintain branches throughout the nation, each promoting vibrant and dynamic activities.

The success of these initiatives is made possible thanks to the understanding and support of our many members. We aim to remain an appealing society that attracts new members, further enhancing its appeal through the active involvement of current members. We are committed to fostering a positive cycle of growth and warmly welcome you to join the Society of Project Management.



Takatoshi HAYAMA, President
May 2025

The Society of Project Management (SPM) Overview

Organization Basics

The Society of Project Management (SPM)

A member of the following organizations:

Science Council of Japan (SCJ)

Japan Federation of Managerial Engineering Societies (FMES)

International Project Management Association (IPMA)

President (Representative Director)

Mr. Takatoshi HAYAMA (Hitachi Systems, Ltd.)

Visions

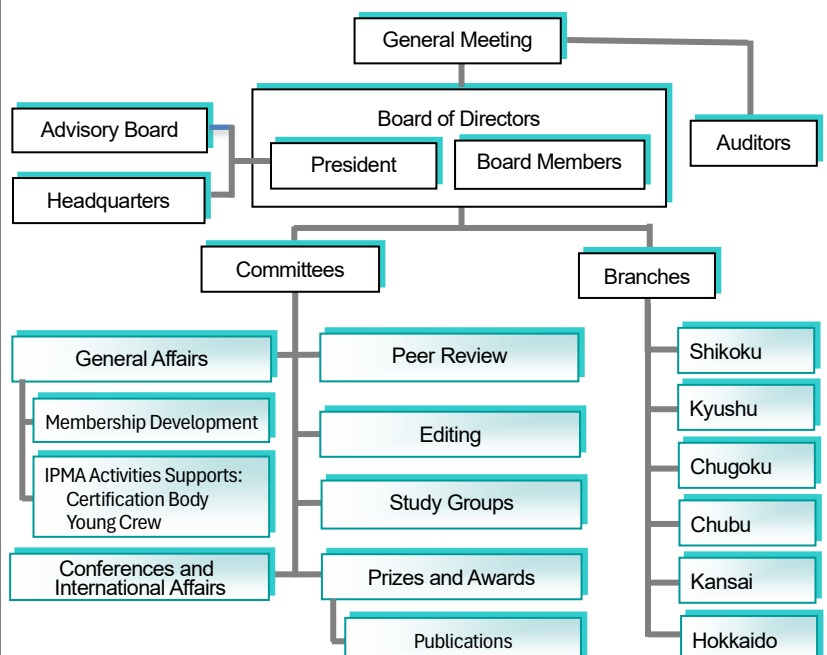
Contributing to the sound development of the international community by creating, establishing, and developing academic and technical frameworks for project management. Members from various fields vigorously implement activities in an open, neutral, cooperative, and interdisciplinary manner. Through various activities in accordance with this approach, the SPM aims to derive high-level results of theoretical and practice research, improve technical and practical approaches, and promote advancement of project management. In addition, SPM would like to contribute to progress in corporate, industrial, social, economic, academic, and cultural environments. SPM will continue to grow and motivate and provide a sense of achievement to its members.

Objectives

To establish and continuously develop project management practices and increase public recognition of project managers' status, SPM is committed to aggressively implementing activities in line with the organization's visions and missions:

- 1) Contributing to society through project management.
- 2) Providing opportunities for broad discussions aimed at improving the status of a project manager and for broader application of project management.
- 3) Reinforcing the organization's operational structure.

Organizational Structure



Major Activities

1. Journal and Newsletter Publication

Each publication frequency: bi-monthly

Journals and newsletters showcase highly academic and practical research papers and feature articles as well as the latest trends and feature articles in specific application areas for comprehensive understanding of project management.

2. Regular and Special Events

International Conference: Established in 2002, ProMAC is a three-day conference held annually to promote international knowledge exchange with approximately 150 papers and keynote addresses.

National Conference: Established in 1999, the annual Spring/Autumn National Conference is a two-day conference featuring approximately 150 research and practice papers and keynote addresses from academia and practice.

Let's Talk to the Senior PM: This casual after-hours meeting is designed to provide basic project management knowledge from senior project managers to those who are willing to learn from practical project experiences.

Others: Other symposiums, forums, and seminars are frequently organized to share project management knowledge, skills, and techniques.



ProMAC Gala Dinner



Spring/Autumn National Conferences

3. Technical Review of Research Papers

Based on the observations of at least two reviewers, the Peer Review Committee duly examines the validity of the submitted papers in terms of academic and/or practical attributes and makes a judgment accordingly. Many individuals have used SPM-reviewed papers for their own doctoral work.

4. Recognitions

The awards and honors are given to outstanding individuals and organizations that have made significant contributions to the advancement of project management and the profession.

5. International Activities

SPM is registered as an IPMA member association, and exclusively provides IPMA literatures, such as ICB 4.0, in Japanese to members to support them to get global and advanced knowledge about project, program and portfolio management. SPM also operates the IPMA 4-level Certification in Japanese.



Let's Talk to the Senior PM

6. Special Interest Groups

Study groups for various research areas, such as agile, AI, and legal precedent, are open to all members. Currently there are five study groups. New groups will be added based on the technical trends in project management and member requests.

7. Publications

Original books have been published that cover the basics as well as comprehensive methodologies and guidelines for managing projects, programs, and portfolios.

8. Branch activities

There are six regional branches in Japan, and each contributes to the development of talents in project management by for project management and stimulating their designated region through research and application of project management.

Footsteps of the Society of Project Management - 1999 ~ 2024

1999	<ul style="list-style-type: none"> • March - SPM established • Publication of SPM Journal and SPM Newsletter started • First National Conference held • PM Glossary (English - Japanese) compiled 	2012	<ul style="list-style-type: none"> • Established Hokkaido Branch • ProMAC held in Honolulu, USA
2000	<ul style="list-style-type: none"> • Established SPM's Vision • Joined as a member of the Japan Federation of Managerial Engineering Societies (FMES) 	2013	<ul style="list-style-type: none"> • New SPM Awards (Outstanding Commentary Award, Incentive Award and Excellent Partnership Award in Application Awards) established • ProMAC held in Hanoi, Vietnam
2001	<ul style="list-style-type: none"> • Achieved bimonthly publication of the Journal and Newsletter • SPM's Official Logo created 	2014	<ul style="list-style-type: none"> • The 15th Anniversary event held in Shinagawa, Tokyo • ISO TC 258 Plenary Meeting held in Kyoto • ProMAC held in Kuala Lumpur, Malaysia
2002	<ul style="list-style-type: none"> • The 3rd Anniversary event held in Nihombashi, Tokyo • Joined as a member of the Science Council of Japan (SCJ) • Joined as a member of the Japan Accreditation Board for Engineering Education (JABEE) • Established Shikoku Branch • The first ProMAC held in Singapore 	2015	<ul style="list-style-type: none"> • ProMAC held in Sapporo, Japan
2003	<ul style="list-style-type: none"> • Established Kyushu Branch • Twilight Salon started • The first original book published • New Year's Seminar started as for corporate members 	2016	<ul style="list-style-type: none"> • Joined as a Member Association of International Project Management Association (IPMA) • ProMAC held in Gold Coast, Australia • ISO TC 258 WG4 meeting held in Tokyo, Japan • New SPM Award (Student Presentation Award) established
2004	<ul style="list-style-type: none"> • Education Forum launched to develop standardized university project management curriculum • ProMAC held in Makuhari, Japan 	2017	<ul style="list-style-type: none"> • ProMAC held in Munich, Germany
2005	<ul style="list-style-type: none"> • Established Chugoku Branch • SPM Awards (Prize of SPM, Distinguished Paper Award and Paper Incentive Award) established 	2018	<ul style="list-style-type: none"> • ProMAC held in Bangkok, Thailand
2006	<ul style="list-style-type: none"> • Headquarters moved to Nishi-Funabashi, Chiba • ProMAC held in Sydney, Australia 	2019	<ul style="list-style-type: none"> • ProMAC held in Yangon, Myanmar • SPM-Young Clue Japan established
2007	<ul style="list-style-type: none"> • Headquarters moved to Shimbashi, Tokyo. • Advisory Board of professors and corporate executives established 	2020	<ul style="list-style-type: none"> • The 20th Anniversary event held in Shinagawa, Tokyo
2008	<ul style="list-style-type: none"> • Established Chubu Branch • ProMAC held in Anchorage, USA • Board of Delegates established 	2021	<ul style="list-style-type: none"> • ProMAC held in Kumamoto, Japan
2009	<ul style="list-style-type: none"> • The 10th Anniversary event held in Hibiya, Tokyo • Converted to a General Incorporated Association • ProMAC held in Bangkok, Thailand • New SPM Awards (Application Awards) established 	2022	<ul style="list-style-type: none"> • Converting Journal and Newsletter to electronic publication
2010	<ul style="list-style-type: none"> • ProMAC held in Tokyo Bay Area, Japan • SPM standard "Organizational Function for Successful Project" established 	2023	<ul style="list-style-type: none"> • ProMAC held in Hanoi, Vietnam
2011	<ul style="list-style-type: none"> • Established Kansai Branch • ProMAC held in Batam Island, Indonesia • Entrusted as a mirror committee of ISO TC 258 by JISC 	2024	<ul style="list-style-type: none"> • The 25th Anniversary event held in Chiyoda, Tokyo • ProMAC held in Bangkok, Thailand

Member's Benefits

- Receive a wide range of information, including journals, newsletters, and more
- Receive special discounts on registration fees for SPM conferences and events
- Attend special events exclusively for members
- Publish papers and articles in journals and newsletters; present at a conference
- Use event attendance certificate to earn credits toward renewing your certifications

Members (approximately as of May 2025)

Individual members: 1,600

Corporate members: 120

Headquarters

Shimbashi Office

2nd floor, ABC Building, Shimbashi 5-12-9, Minato-ku, Tokyo, 105-0004, Japan

URL: <https://www.spm.or.jp/>
FAX: +81-50-3588-6935

